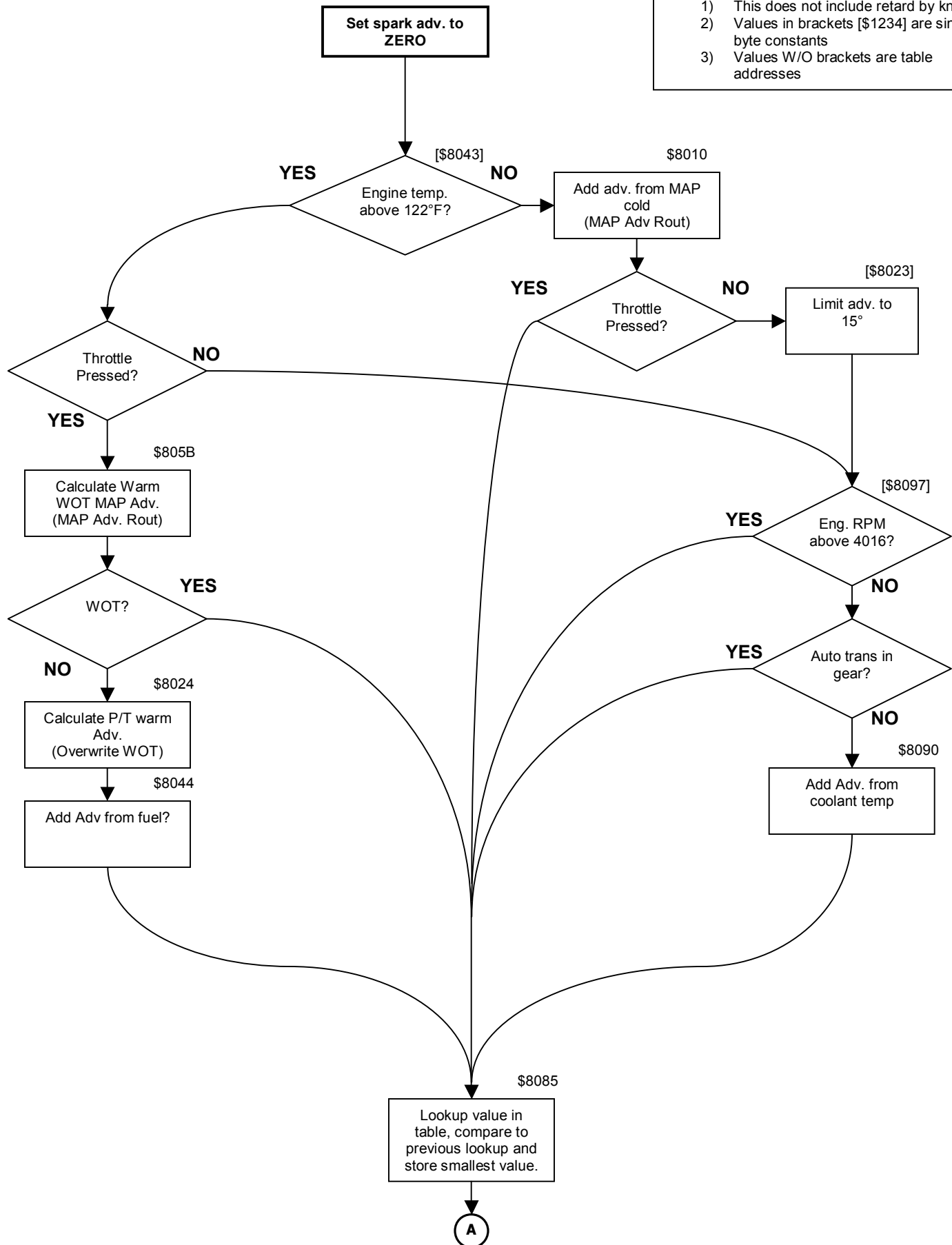
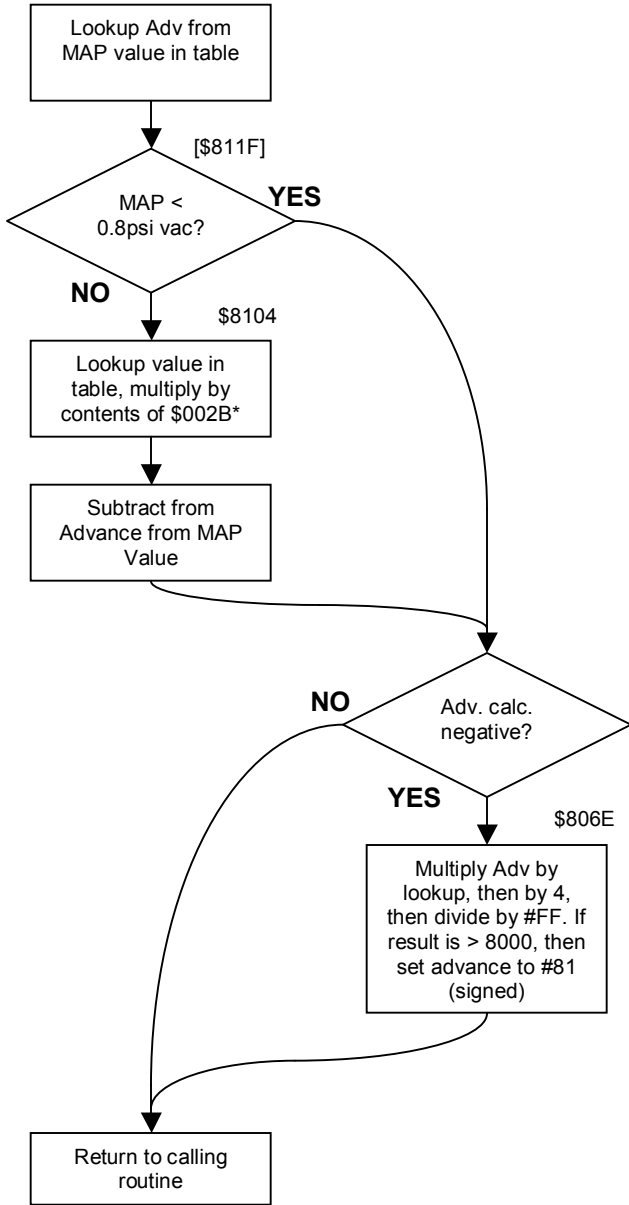


- 1) This does not include retard by knock.
- 2) Values in brackets [\$1234] are single byte constants
- 3) Values W/O brackets are table addresses



MAP Spark Adv rout



* The value in #002B is 0, 25, 50, 75, or 100% of the base value

The tables at 8104 and 806E are used for long-term knock control. They decrease the advance based on MAP and RPM. The value in 002B is set by the boost control routine and increases with time when boost is less than 5 psi.

